

During a rainfall, excess fertilizers, pesticides, and herbicides applied to lawns and gardens may be washed off and carried to our waterways, where they may disrupt the natural balance of the organisms and pollute our environment.

Fertilizers can cause an explosion of unwanted plant and algae growth that is often followed by a large die-off of vegetation.

The decomposing vegetation uses up oxygen in the water and may cause large-scale fish kills.



Pesticides and herbicides are poisons.

Their use often results in killing desirable plants and bugs along with the targeted pests.

There are both health and environmental risks associated with pesticide and herbicide exposure.

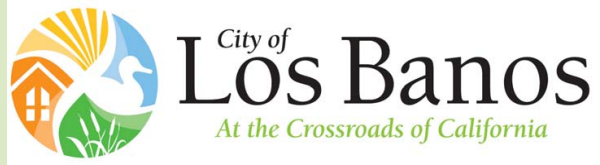
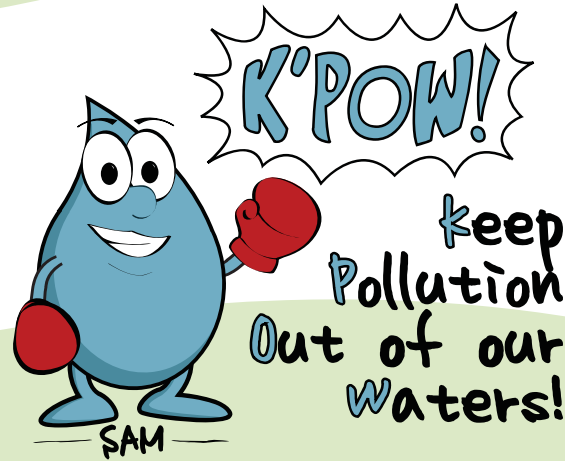
You can help clean Merced County's waterways by reducing your use of pesticides, herbicides and fertilizers.

Learn more about healthy landscaping by exploring these websites.

<http://www.epa.gov/pesticides>

<http://www.audubon.org/bird/pesticides>

<http://npic.orst.edu>



Public Works Department
411 Madison Avenue
Los Banos, CA 93635
Telephone: (209)827-7056
Fax: (209)827-7069
www.losbanos.org



Pesticide, Herbicide & Fertilizer Use

Fertilizing

Most lawns can get the nutrients they need from the grass clippings that result from lawn mowing.

If you choose to fertilize, do so sparingly and always in accordance with manufacturer's directions.

Fertilize grass no more than once or twice a year.

Never apply fertilizer when a rain event is forecast.

Keep or remove fertilizer from impervious surfaces such as walkways, driveways, and streets.

Store chemicals indoors or in a covered area to reduce the chance of accidental spills and releases.

Fertilize less!
... for your lawn
... for your wallet
... for our waterways!



Pesticides & Herbicides

Before using pesticides and herbicides, be sure to correctly identify the problem.

Select a "pest-specific" product to minimize harm to other helpful plants and insects.

Apply only to the problem areas. Don't waste your time and money and risk polluting the environment by placing chemicals where and when they aren't needed.

Overuse of pesticides and herbicides can result in pest resistance. While these chemicals can provide effective treatment for serious pest problems, they should not be used routinely or indiscriminately.

**Don't kill the good
with the bad...**

Consider...

Landscaping with native plants

Slow-release fertilizers as an alternative

Using safer, less toxic alternatives

