

TRAFFIC ADVISORY

INTERSECTION OF HWY 152/165

6/13/2023 – 6/15/2023

10:00 pm – 6:00 am

The City of Los Banos and its Contractor will be repairing a sanitary sewer at the intersection of Highway 152 and Highway 165. The intersection will be in flashing red. A flashing red signal light means STOP. After stopping, you may go when it is safe.

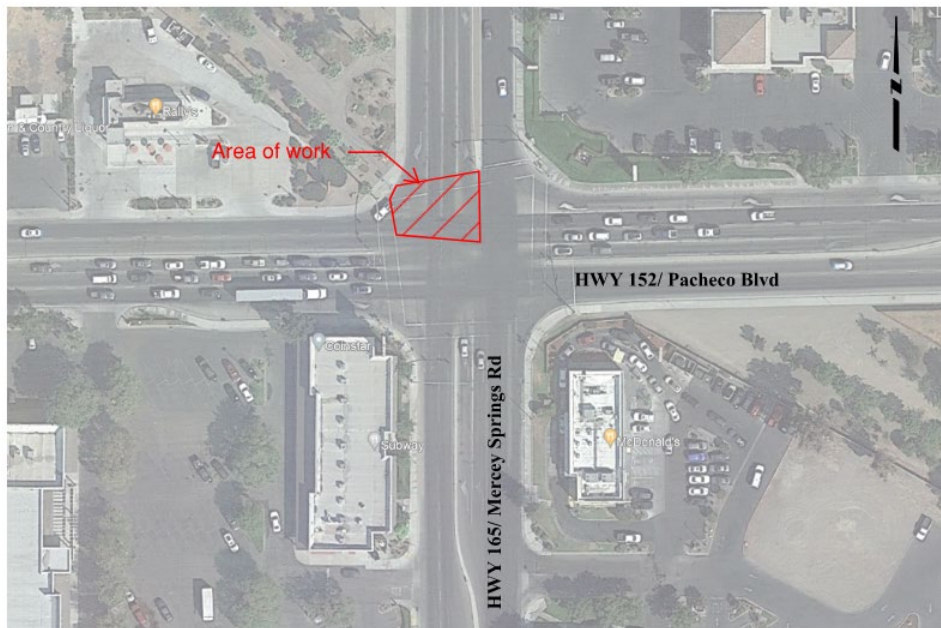
Road Closure Detail

State Route 165

- Southbound lanes between G Street and Highway 152 will be closed. Please follow the detour signs.

State Route 152

- Westbound lanes approaching the intersection will be reduced to one combined through/left lane and one right turn only lane
- Eastbound lanes approaching the intersection will be reduced to one combined through/left lane and one right turn only lane



QUESTIONS CONTACT: (209) 827-7056
Public Works Department
411 Madison Avenue, Los Banos, CA 93635